

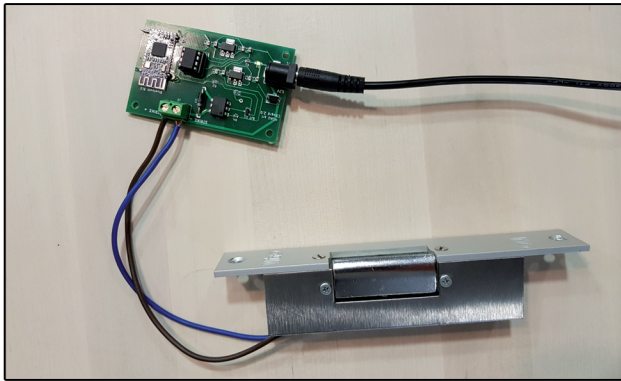
**HOAU**

**KEYLESS ENTRY SYSTEM**

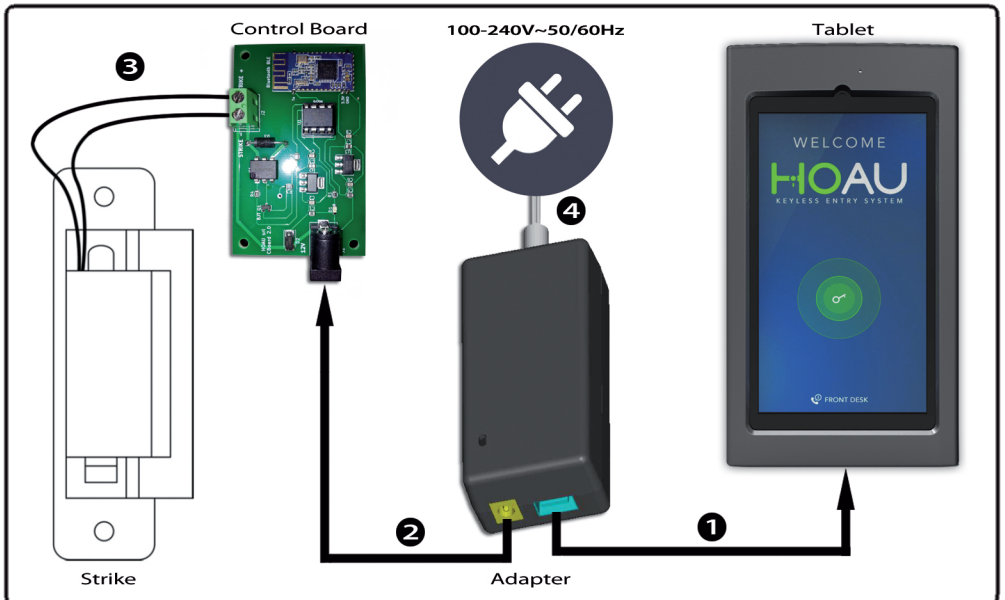
## Unlock System's installation

### STRIKE Version

1. Plug USB cable from Adapter to HOAU's tablet.
  2. Plug dc barrel jack from Adapter to Control Board.
  3. Plug the 2 wires from Strike lock to Control Board's green socket.
  4. Plug Adapter's brown and blue wires to 100-240V~50/60Hz.
- A green led on Adapter and on Control Board turns on.



Control Board connections



Complete scheme connections

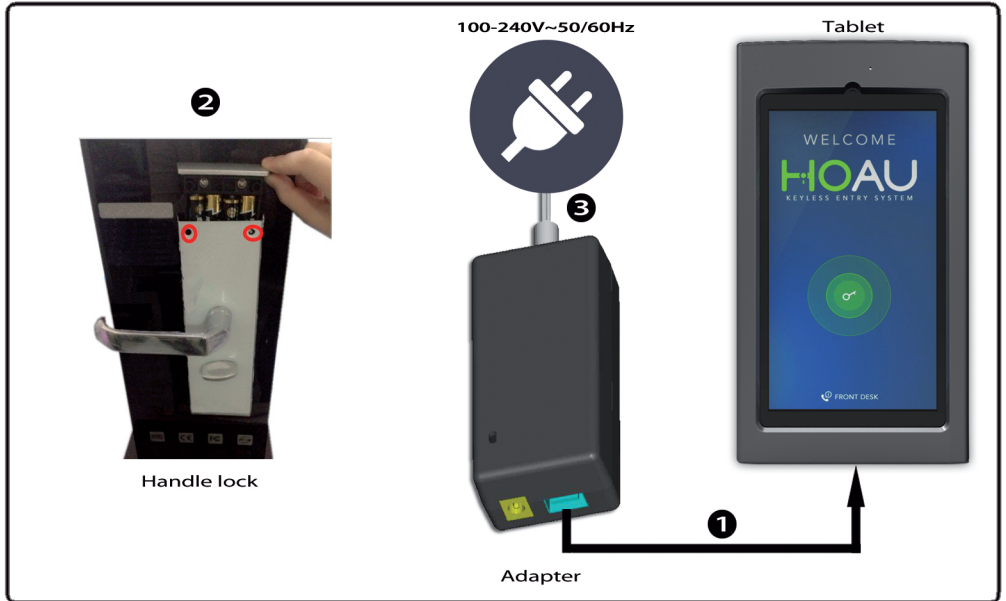
## ***HANDLE Version***

1. Plug USB cable from Adapter to HOAU's tablet.

2. Insert four AA batteries into handle lock.

(to open battery box, you should undoing the two screws (marked with red circle), and then take out the battery box and put 4 AA batteries in. When you put all the four batteries, you can hear a beep from the lock. That means your lock was successfully powered.)

3. Plug Adapter's brown and blue wires to 100-240V~50/60Hz. A green led on Adapter turns on.



Complete scheme connections

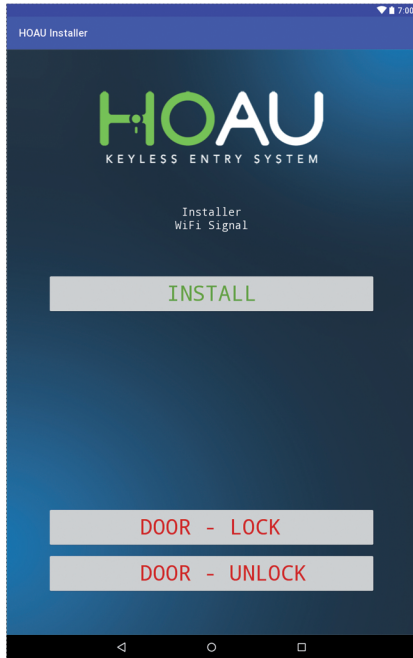


Handle design (external side)

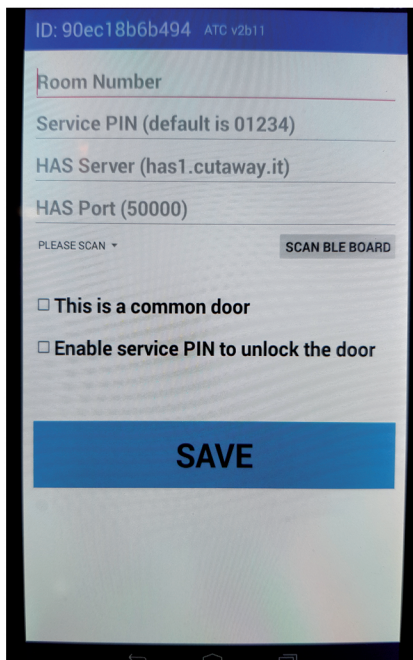


Handle design (internal side)

# System Configuration



To download the HOAU software insert the pin code you received in your email.



First click on "SCAN BLE BOARD" and select Ble Board to pair. Then fill the following fields:

- Room** - enter the room number or name
- Service pin** - enter the service PIN code
- HAS server** - enter the link sent in the mail
- HAS port** - enter the number sent in the email

**This is common door** - select if it is a common door  
**Enable service pin to unlock the door** - enable the service pin